

Elab Fluor® Violet 610 Anti-Human/Monkey HLA-DR Antibody[L243]

Catalog Number: E-AB-F1111T

Note: Centrifuge before opening to ensure complete recovery of vial contents.

Description

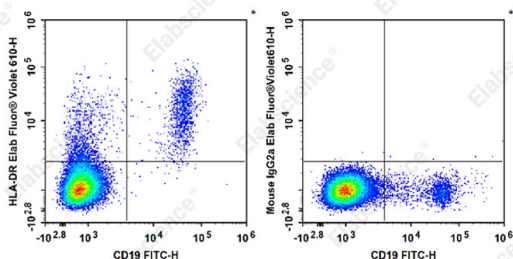
Reactivity	Human;Rhesus
Host	Mouse
Isotype	Mouse IgG2a, κ
Clone No.	L243
Isotype Control	Elab Fluor® Violet 610 Mouse IgG2a, κ Isotype Control[C1.18.4] [Product E-AB-F09802T]
Conjugation	Elab Fluor® Violet 610
Conjugation Information	Elab Fluor® Violet 610 is designed to be excited by the violet laser (405 nm) and detected using an optical filter centered near 613 nm (e.g., a 615/20 nm bandpass filter).
Storage Buffer	Phosphate buffered solution, pH 7.2, containing 0.09% stabilizer.

Applications

Recommended usage

FCM	Each lot of this antibody is quality control tested by flow cytometric analysis. The amount of the reagent is suggested to be used 5 μL of antibody per test (million cells in 100 μL staining volume or per 100 μL of whole blood). Please check your vial before the experiment. Since applications vary, the appropriate dilutions must be determined for individual use.
------------	---

Data



Staining of normal human peripheral blood cells with FITC

Anti-Human CD19 Antibody[CB19] and Elab Fluor® Violet 610 Anti-Human/Monkey HLA-DR Antibody[L243] (left) or

Elab Fluor® Violet 610 Mouse IgG2a, κ Isotype Control (right). Cells in the lymphocytes gate were used for analysis.

Preparation & Storage

Storage	Keep as concentrated solution. This product can be stored at 2-8°C for 24 months. Please protected from prolonged exposure to light and do not freeze.
Shipping	Ice bag

Antigen Information

Alternate Names	DRA/DRB1;HLA class II histocompatibility antigen DR alpha/ DRB1-15 beta chain;HLA-DRA1/DRB1;MHC class II antigen DRA
Uniprot ID	P01903;P01911;

For Research Use Only

Toll-free: 1-888-852-8623
Web: www.elabscience.com

Tel: 1-832-243-6086
Email: techsupport@elabscience.com

Fax: 1-832-243-6017

Gene ID

3122;3123

Background

HLA-DR is a heterodimeric cell surface glycoprotein comprised of a 36 kD α (heavy) chain and a 27 kD β (light) chain. It is expressed on B cells, activated T cells, monocytes/macrophages, dendritic cells, and other non-professional APCs. In conjunction with the CD3/TCR complex and CD4 molecules, HLA-DR is critical for efficient peptide presentation to CD4+ T cells.